

The Judith A. Lese Breast Cancer Foundation, Inc.

100% of contributions are disbursed



Est. 2003

“in the pursuit of education and cure for breast cancer”

EXECUTIVE BOARD

Judith A. Lese, M.Ed.
Founder and CEO

Laurence S. Lese, J.D.
Vice-President

Jay E. Hagler, M.A.
Treasurer and Secretary

MEDICAL ADVISORY COUNCIL

Nancy Davidson, M.D.
Senior Vice President,
Director and Professor
Clinical Research Division
Fred Hutchinson Cancer
Research Center

Pouneh Razavi, M.D.
Director of Breast Imaging,
Sibley Memorial Hospital and
Suburban Hospital

Frederick P. Smith, M.D.
Medical Oncologist
Chevy Chase, Maryland

LEGAL COUNSELORS

Reid Avett, Esq.
Womble Bond
Dickinson (US) LLP
Washington, DC

Patrick McPherson, Esq.
Duane Morris LLP
Washington, DC

501(c)(3) Organization
Fed. ID 20-0061083

JALBCF # 4-26

EVERY MONTH IS BREAST CANCER AWARENESS MONTH

April 7, 2026

Dear Foundation Friends,

Each day, my mind's thoughts and my heart's emotions are filled with hopes how you, your family, your friends have all had healthy and productive lives personally and professionally during this past year. Our Executive and Medical Advisory Board Members remain totally focused on our mission dedicated since our creation in 2003 “in the pursuit of education and cure for breast cancer”! Please know how much we value YOUR continued commitment, support and generosity to enable research growth, treatments, clinical trials, lives' longevity and to discover a cure for breast cancer! YOU make it possible for The Judith A. Lese Breast Cancer Foundation to increase our support for the goals we have and are committed to since our beginning in 2003. We remain committed to our disbursement of 100% of all monies raised to utilize and focus the monies predominantly for breast cancer research, clinical trials, breast cancer education and health care resources.

Our 2025 Foundation disbursements:

- *The Fred Hutchinson Cancer Center, Seattle, Washington for support of researcher Lynn Symonds, MD.
- *The Kimmel Cancer Center Johns Hopkins, Baltimore for continued support of researcher Cesar Santa-Maria, MD-Clinical Trials.
- *The Jackson Laboratory, Bar Harbor, Maine for support of research on Triple-Negative Breast Cancer.
- *The Jonsson Comprehensive Cancer Foundation, U.C.L.A. for continued Breast Cancer research of Dennis Slamon, MD.
- *The Sullivan Breast Center, Sibley Memorial Hospital, Washington, D.C. to establish a fund with The Sibley Memorial Hospital Foundation towards The Sullivan Breast Center's acquisition of an Ultrasound machine.

Mallory Smith, Ph.D., at Fred Hutch Cancer Center: “On behalf of everyone at Fred Hutch Cancer Center, thank you for your generous support of the Judith A. Lese Breast Cancer Research Fund. Your partnership continues to make a profound difference for the future of breast cancer research.

“For the last six years, Drs. Jennifer Specht and Cecilia Yeung have been supported, in part, by the Judith A. Lese Breast Cancer Foundation, and they have made remarkable progress.

Recently, they published a scientific paper and optimized a new test which is now moving toward real use with patients. Their research is helping doctors better understand how immunotherapies behave inside the body, a step that brings more hope, safety, and clarity to people facing breast cancer.

“Starting in 2026, Dr. Lynn Symonds will be the newest Fred Hutch investigator supported by the Foundation. She studies a particular vulnerability in triple negative breast cancer that can be leveraged with certain targeted therapies. Her new test, HRDefine, will better identify which patients would benefit from these targeted therapies.

“To share more details about the progress you have helped make possible and the Fred Hutch Breast Cancer program, Fred Hutch is pleased to provide three items as a part of this year’s update: (1) **A research report** from Drs. Yeung and Specht summarizing their accomplishments this past year; (2) **A short impact report** highlighting advances across the Fred Hutch Breast Cancer Program; and **A recently published scientific article** by Drs. Specht and Yeung.” [documents (1) and (2) are with this mailing; (3) is on Foundation website.]

Cesar A. Santa-Maria, MD, MSCI, Associate Professor at Johns Hopkins and Director of Breast Cancer Trials, focuses his “research on advancing the treatment of breast cancer through both the development of novel immunotherapy and targeted approaches and the optimization of existing therapies to better personalize care. A key example of this work is the **NeoADAPT** study, which investigates whether early metabolic changes detected by PET imaging can identify patients with stage II and III triple-negative breast cancer (TNBC) who are responding to chemo-immunotherapy. By using imaging biomarkers to guide treatment decisions, this research aims to refine therapeutic strategies, minimize unnecessary toxicity, and improve outcomes through a more individualized approach to care.”

The Judith A. Lese Breast Cancer 2026 Foundation Fundraiser Dinner is being held Tuesday, May 12. Our Keynote Speaker is Pouneh Razavi, M.D., Director of Breast Imaging in the National Capital Region. She is a diagnostic radiologist in D.C. with over 25 years in the medical field. Dr. Razavi supervises, manages and directs the breast imaging operations at The Sullivan Breast Center.

Laurence Lese, Vice-President. On March 27, 2025, Duane Morris, our trademark and intellectual property counsel, notified us that our declaration of use and incontestability under Sections 8 and 15 of the Trademark Act that Duane Morris had filed with the U.S. Patent and Trademark Office has been accepted. Thus, our trademark remains registered, thereby reducing the number and type of challenges that can be made against our registration because our trademark is now incontestable.

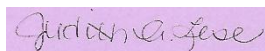
Jay Hagler, Secretary and Treasurer. We would like to thank all our supporters who generously donated in the recent 2025 CFC. This has been a major source of donations to our Foundation since 2013. The Office of Personnel Management, which runs the CFC, is making changes to the process, and we’re not sure what will happen with the 2026 CFC. In an email to us, OPM provided the following: *“Systems that are not essential for the collection and distribution of donations are being retired to reduce administrative costs and maximize the funds received by charities. A formal decision has not been made for the CFC overall. When a formal decision is made regarding future campaigns, it will be communicated.”*

Regarding our website, we would like once again to thank our Webmaster Stepanie Lemke for all her hard work to support our online presence. This past year our website was upgraded to an encrypted “https” site to protect the confidentiality and integrity of information exchanged. If you have not gone online lately, please do so at **www.judithalese.org**.

I invite all, as always, to share your ideas for growing the Foundation’s Fundraising in support of accomplishing our mission. Looking forward again to our Fundraisers with **Kendra Scott** on December 19 and 20, 2026 (in store and online with code on flyer); **California Pizza Kitchen** on June 8, 9, 10 and 11, 2026, on August 17, 18, 19 and 20, 2026, and on October 5, 6, 7 and 8, 2026; **Not Your Average Joe’s** every Tuesday and Wednesday in October Breast Cancer Awareness Month in 2026; and our **WALK TO WIN** the battle against breast cancer on October 4, 2026. Please provide us with your email addresses to allow us to contact you. Always check our website for other postings! Special gratitude to each of you giving from your hearts.

We are a GRASSROOTS section 501(c)(3) non-profit. Our commitment to fulfilling our mission in supporting research and clinical studies, promoting breast cancer education and resource care are far reaching. Yes, with YOUR help we can grow!

With my deepest gratitude to each of YOU and for each of YOU!



Judith A. Lese
Founder and CEO

Research Report from Drs. Yeung and Specht at Fred Hutch Cancer Center

Made possible with support from The Judith A. Lese Breast Cancer Foundation

Discovering new biomarkers in breast cancer

The first line of treatment for triple-negative breast cancer (TNBC) is typically chemotherapy, which helps shrink the tumor prior to surgery. If the tumor is completely removed, the prognosis is generally excellent. However, if the tumor can't be fully removed, patients face a worse prognosis, and the cancer often does not respond well to other forms of treatment.

Researchers now know that the immune system plays an important role in how TNBC responds to treatment. Two key factors are:

1. The tumor immune microenvironment (TIME) – how immune cells are arranged and behave inside and around the tumor.
2. Tumor infiltrating lymphocytes (TILs) – immune cells that have entered the tumor and may help fight the cancer.

Our goal is to better understand which immune cells are involved when TNBC resists treatment. To do this, we use an experimental technique called “spatial proteomics.” This cutting-edge technology allows us to look at many proteins in the cancer tissue at the same time. It helps us see how cancer cells and immune cells interact with each other inside the tumor and then use this information to improve treatments.

Using this approach, we created detailed images of breast cancer tissue. In these images, cancer cells appear dark blue, while different types of immune cells appear in colors such as orange, yellow, cyan and red (Figure 1). An artificial intelligence (AI) program helps identify each cell type and assign it a color. This novel data gives us a clearer picture of how immune cells behave in tumors that remain after treatment. We are now analyzing this data to understand how these immune patterns relate to patient outcomes, including survival.

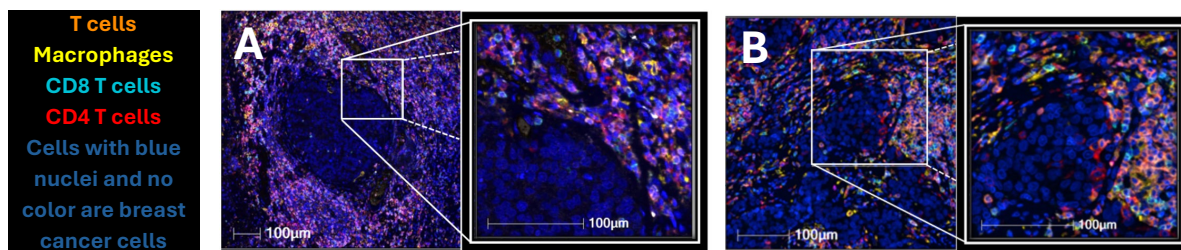


Figure 1. Breast cancer tissue under a microscope which has been categorized and color-coded by cell types. The white boxes in the left are enlarged and presented as the panels on the right for better visualization of the different immune cells that interact with the tumor. The legend indicates the color coding for the different immune cell types. Each image (A, B) represents a different patient breast cancer we tested. Patient A has minimal infiltration of immune cells in the tumor (no brightly colored cells in the tumor). In contrast, patient B shows a tumor with several immune cells that have infiltrated into the tumor.

Developing new assays to understand immunotherapy side effects

Immunotherapy has revolutionized cancer treatment for many patients, but it does not work equally well for everyone. Immunotherapies work by taking a patient's own immune cells, modifying them in a lab so they can better recognize cancer, and then putting those engineered immune cells back into the patient's body. We are trying to better understand why some patients respond well, while others see little effect or experience serious side effects. To answer these questions, we developed three lab tests (assays) that can detect the engineered immune cells in patient tissue samples. These tests allow us to see where the cells travel in the body and whether they are the cause of side effects.

We are currently optimizing one of these lab tests for use in the clinic. It is called the WPRE digital PCR assay (Figure 2). Over the past year, we improved the accuracy of this test so it is easier to compare results across patients. This means a doctor can better monitor whether the engineered immune cells are reaching the tumor, whether they may be causing side effects, or whether the cells are growing in numbers or disappearing over time.

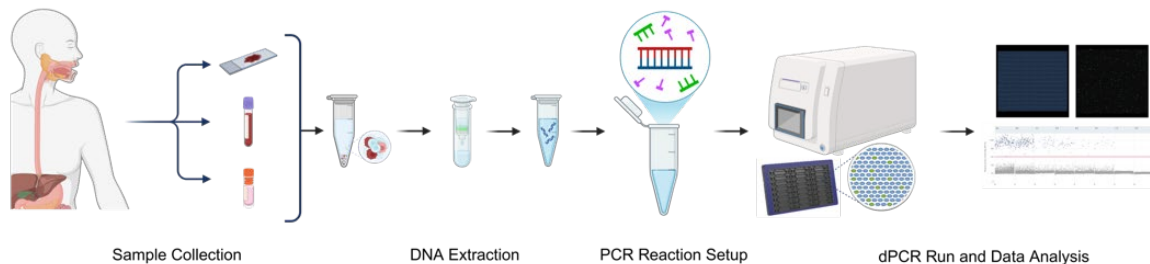


Figure 2. The WPRE digital PCR assay for testing patients' tumor tissue samples. Samples can be from fresh blood/liquid biopsy, fresh surgical tissue, archived biopsy tissue, or cryopreserved cells.

Generous funding from the Judith A. Lese Breast Cancer Research Foundation has helped move us closer to solving one of the biggest challenges in breast cancer: why some tumors resist treatment. By understanding how cancer fights back, we can develop more effective therapies that improve and save lives.

Meet the Researchers



Jennifer Specht, MD, is a board-certified medical oncologist who specializes in all stages of breast cancer with expertise in triple-negative breast cancer. She leads the Phase 1 Breast Cancer Program at Fred Hutch and is Clinical Research Director, Breast Oncology, at UW Medicine. Her research interests include breast cancer genetics, immunotherapy, and molecular imaging to better understand breast cancer biology. She holds the Jill D. Bennett Endowed Professorship in Breast Cancer at UW Medicine.



Cecilia Yeung, MD, is a clinical pathologist, professor, and medical director of Clinical Testing Labs at Fred Hutch and an associate professor in the Department of Laboratory Medicine and Pathology at UW Medicine. Her expertise in molecular pathology has led to novel molecular diagnostic platforms that improve the speed, accuracy and cost of diagnostic tools.

Mallory Smith, PhD, Associate Director, Foundation Relations, Philanthropy

1100 Fairview Ave. N. | Mail Stop LG-400 | Seattle, WA 98109 | 206.667.5265

msmith8@fredhutch.org

Bold Ideas Accelerate Breast Cancer Research

Your support fuels groundbreaking discoveries

Fred Hutch Cancer Center's multidisciplinary breast oncology program brings together Fred Hutch and UW Medicine experts to drive progress along the full spectrum of breast cancer research and care. With your support, we are accelerating the pace of breakthroughs in breast cancer prevention, detection, treatment, and survivorship.

Last fall, we welcomed a new program leader: **Heather Parsons, MD, MPH**, associate professor at Fred Hutch and UW Medicine and holder of the Maudslien Endowed Chair in Breast Cancer Precision Oncology Research at Fred Hutch. Dr. Parsons, who joined us from Dana-Farber Cancer Center in Boston, is an expert in the emerging field of liquid biopsies — blood tests that can detect and monitor cancer. And her ethos of innovation comes through in her leadership. She will empower our researchers and clinicians to pursue bold ideas that fuel game-changing discoveries in research and care.

In 2025, with help from supporters like you, our researchers continued to make extraordinary breakthroughs. From leading advances in imaging technologies that could expand clinical trial access to identifying new vulnerabilities in recurrent tumor cells, our scientists are transforming what's possible to improve outcomes for patients. **Thank you.**

Measuring the 'unmeasurable'

When breast cancer spreads, it most often travels to the bones. Unfortunately, doctors have long struggled with a major problem: There has not been a reliable way to tell whether treatments are working when cancer is mainly in the bones. This can result in patients with bone metastases continuing ineffective treatments longer than necessary and also often makes them ineligible to participate in clinical trials.

Jennifer Specht, MD, is working to change that by leading a multicenter clinical trial testing a new method for predicting treatment effectiveness — including for patients with bone metastases. Dr. Specht is a breast oncologist and professor at Fred Hutch and UW Medicine and Clinical Research Director of Breast Oncology at UW Medicine, where she holds the Jill D. Bennett Endowed Professorship in Breast Cancer.

The trial followed 138 patients over three to five years and has shown that with FDG-PET/CT imaging technology, clinicians can predict progression-free survival for patients with bone-dominant metastatic breast cancer after just 12 weeks.



Dr. Jennifer Specht

Beyond
50

For more than 50 years, Fred Hutch has looked beyond what's possible today to a new era of discovery. With your partnership, our Campaign for Fred Hutch is transforming the pace and scale of innovation so we can redefine cancer and infectious disease for generations to come.

Fred Hutch is an independent, nonprofit organization that also serves as the cancer program for UW Medicine. Fred Hutch is proud to raise funds that fuel the adult oncology program on behalf of both Fred Hutch and UW Medicine.

UW Medicine

The scans measure how active cancer cells are, rather than just showing their shape or size.

Traditional imaging tools like CT scans, MRIs, and bone scans can detect cancer in the bones but do not reliably show whether treatments are helping, which is why bone tumors are often considered “unmeasurable.”

Dr. Specht’s discovery could fill this gap and provide patients access to clinical trials offering new experimental treatments after all other options have been exhausted. In addition, clinicians could soon use this technology to guide treatment decisions and monitor effectiveness more quickly than what is possible today to help patients receive better and more timely care.

Vulnerabilities in recurrent cancer cells open pathways to new treatments



Dr. James Alvarez

Recurrent breast cancers tend to be more treatment-resistant than primary cancers, meaning existing therapies are less likely to work. **James Alvarez, PhD**, associate professor at Fred Hutch, investigates vulnerabilities in recurrent breast tumor cells that could lead to more effective treatments.

Recently, he discovered that in cases of relapsed cancer, HER2-driven tumor cells rely heavily on an enzyme called dihydroorotate dehydrogenase (DHODH) to grow and survive — making it a promising target for new therapies.

Using CRISPR technology, Dr. Alvarez’s team examined 421 metabolic genes in primary and recurrent HER2-driven tumor cells. Though the primary and recurrent cancers are genetically the same, the team found that they rely on different survival strategies. Primary tumor cells can form the building blocks for DNA replication by recycling unused parts of other nucleotides, a process called nucleotide salvage. Recurrent tumor cells, however, cannot — they must make them from scratch, a process dependent on DHODH.

In preclinical models, Dr. Alvarez found that DHODH inhibitors stopped the growth of recurrent tumor cells completely, pointing to DHODH as a promising target for more effective treatments in recurrent HER2-driven breast cancers.

Dr. Alvarez is planning additional studies to examine how these mechanisms work in tumors in patients. His discoveries could pave the way for transforming outcomes for patients with recurrent breast cancers.



“I’m excited to be leading this group of incredible researchers and doctors to help reduce the burden of breast cancer in our patients and in the world.”

— Dr. Heather Parsons

Join us for a Discovery Dialogue on Wednesday, May 13, to learn more about recent and upcoming breakthroughs in breast cancer research at Fred Hutch.

Register by Friday, May 1.

Contact Briana Voigt at bvoigt2@fredhutch.org or 206-667-3733.

Thank you for supporting discoveries like these. To learn more about how your generosity fuels new advances in breast cancer research at Fred Hutch, **please contact us at 206.667.4399 or philanthropy@fredhutch.org.**

The Judith A. Lese Breast Cancer Foundation, Inc.



Est. 2003

“in the pursuit of education and cure for breast cancer”

Cordially invites you to our 2026 Fundraiser Dinner Banquet

Guest Speaker

Pouneh Razavi, M.D.
Director of Breast Imaging
Sullivan Center for Breast Health
Sibley Memorial Hospital Johns Hopkins Medicine
Washington, DC

Tuesday, May 12, 2026

Maggiano’s Little Italy
5333 Wisconsin Avenue, NW
Washington, DC 20015

6:15 pm Meet and Greet (Charge/Cash Bar)	7:00 pm Dinner	7:50 pm Program/Guest Speaker	8:30 pm Dessert
--	-------------------	----------------------------------	--------------------

Discounted parking rates with validated tickets for Chevy Chase Pavilion Garage

Select Contribution Tier plus \$65 Per Person (non-deductible); Each Additional Dinner Guest is \$65

Please RSVP by Saturday, May 9, 2026

Contribution Tiers

(fully deductible, except for \$65 dinner cost)

Greater than \$5,000	Foundation Tier + \$65 dinner cost
\$5,000	Trustee Tier + \$65 dinner cost
\$2,000	Guardian Tier + \$65 dinner cost
\$1,000	Sustainer Tier + \$65 dinner cost
\$500	Shielder Tier + \$65 dinner cost
\$200	Protector Tier + \$65 dinner cost

The Judith A. Lese Breast Cancer Foundation, Inc.
16012 Chester Mill Terrace, Silver Spring, MD 20906
Phone: 240-970-5278

501(c)(3) organization-non-endowed / Fed. ID No. 20-0061083

Email: LeseCancerFdn@aol.com / Website: www.judithalese.org



Est. 2003

“in the pursuit of education and cure for breast cancer”

The Judith A. Lese Breast Cancer Foundation, Inc.

16012 Chester Mill Terrace, Silver Spring, MD 20906 / Phone: 240-970-5278

501(c)(3) organization-non endowed / Fed ID No. 20-0061083

Email: LeseCancerFdn@aol.com / Website: www.judithalesc.org

2026 Fundraiser Dinner on May 12, 2026 at Maggiano’s Little Italy, Washington, DC

Please RSVP by Saturday, May 9, 2026

Contributor’s receipt for your personal records

Check Date: _____ Check No: _____ Check Amount: _____ Memo: _____

Please detach at this line and return lower portion

Please send check to: The Judith A. Lese Breast Cancer Foundation, Inc.
16012 Chester Mill Terrace, Silver Spring, Maryland 20906

Please make check payable to: The Judith A. Lese Breast Cancer Foundation, Inc.

Contribution [Deductible - a tax receipt will be mailed to you]	Contribution Tiers		Check Off Amount
	Foundation	> \$5,000	
	Trustee	\$5,000	
	Guardian	\$2,000	
	Sustainer	\$1,000	
	Shielder	\$500	
	Protector	\$200	

Dinner [Not Deductible]	Dinner Attendees	Attendee Names (\$65/person)	Amount	Total
	Self		\$65	
	Guest		\$65	
	Guest		\$65	
	Guest		\$65	
	Guest		\$65	
	Guest		\$65	
Total Check Amount =				

The minimum contribution is \$265, which includes \$65 for the dinner (plus \$65 per guest to cover dinner expense).

Sorry, I am not able to attend the dinner. Please accept my contribution of enclosed: \$ _____

Your Contact Information:

Name: _____ Phone Number: _____

Address: _____

E-Mail: _____

The Judith A. Lese Breast Cancer Foundation, Inc.

501(c)(3) Organization; Fed. ID 20-0061083



Est. 2003

*“in the pursuit of education and cure
for breast cancer”*

2026 WALK TO WIN the battle against breast cancer

Annual Walk

Sunday, October 4, 2026

RAIN OR SHINE

Capital Crescent Trail

Meet/park at the Bethesda Pool,
Little Falls Pkwy & Hillandale Rd,
Bethesda, Maryland

Pledge/Sponsor Form

<u>Name/Address</u>	<u>Amount</u>
1.	
2.	
3.	
4.	

Please Send Us Your E-Mail Addresses

The Judith A. Lese Breast Cancer Foundation, Inc. has an e-mail ListServ to provide you with the latest information on Foundation events and breast cancer education. To become part of our ListServ, please send your e-mail addresses to the Foundation at: LeseCancerFdn@aol.com

Note: Your e-mail addresses will not be used for solicitations, advertising, mass mailings, or any other purposes unrelated to the activities of The Judith A. Lese Breast Cancer Foundation, Inc.

- All contributions are tax-deductible.
- Checks payable to: The Judith A. Lese Breast Cancer Foundation, Inc.
- Mail check to: 16012 Chester Mill Terrace Silver Spring, MD 20906

WALK TO WIN the battle against breast cancer is sponsored by The Judith A. Lese Breast Cancer Foundation

WALK TO WIN is an annual Foundation fundraiser event, which is held in October commemorating Breast Cancer Awareness Month.

* Our Foundation is a grass-roots, Washington DC Metropolitan Area, non-endowed organization; founded 2003.

* The mission of the Foundation is to promote awareness of this disease with accurate information and work to eradicate breast cancer by sponsoring fundraising events that support us in *“the pursuit of education and cure for breast cancer.”*

* Monies raised support specific researchers focused on self-risk, preventative knowledge, treatments, and cures for breast cancer. These researchers are at The Fred Hutchinson Cancer Center in Seattle; the Sidney Kimmel Comprehensive Cancer Center at Johns Hopkins; The Jackson Laboratory in Bar Harbor, Maine; and the UCLA Jonsson Comprehensive Cancer Center in Los Angeles.

* Monies raised support Clinical Trials.

* Monies raised promote awareness of this disease through speakers, documents, literature, and technical postings to our website (www.judithalese.org).

* Monies raised support The Sullivan Center for Breast Health at Sibley Memorial Hospital, Johns Hopkins Medicine.

Judith A. Lese, Founder/CEO

WALK TO WIN Fundraiser Event

Entry Fee (required):

\$50/person (tax-deductible) for the event

Contributions (optional):

Contribution Tiers (tax deductible)	
Greater than \$5,000	Foundation Tier
\$5,000	Trustee Tier
\$2,000	Guardian Tier
\$1,000	Sustainer Tier
\$500	Shielder Tier
\$200	Protector Tier

Please make checks payable to:

**The Judith A. Lese
Breast Cancer Foundation, Inc.**

Mailing Address: **16012 Chester Mill Terrace
Silver Spring, MD 20906**

Schedule:

9:30 am: Registration begins at Bethesda Pool location adjacent to the Capital Crescent Trail

10:00 am: Welcome

10:15 -11:15 am: WALK TO WIN

Please RSVP by Saturday, October 3 to:

Email: LeseCancerFdn@aol.com

Phone: **240-970-5278**

(Walk-Ups are Welcomed)

Registration Information

Please photocopy for additional participants

Name

Address and Apt #

City, State, Zip

Daytime / Evening Phone

Email

T-Shirt Size:

S__ M__ L__ XL__

Registration Fee = \$50/person (tax-deductible)

Please make checks payable to The Judith A. Lese Breast Cancer Foundation, Inc.

I hereby release and hold harmless The Judith A. Lese Breast Cancer Foundation, Inc. and Capital Crescent Trail from any loss, liability, or claims I may have arising out of my participation in this event.

Photographs taken may be used on Foundation's website or brochure. By signing below agreement is made with this. If you do not want your photo used, please contact Judith A. Lese.

Contact information is on Walk to Win flyer.

Signature of Participant (Over 18 yrs.)

Signature of Parent/Guardian if Participant is under 18 yrs.



California Pizza Kitchen

Breast Cancer Awareness
Fundraiser Event* to Benefit

The Judith A. Lese Breast Cancer Foundation

**June 8, 9, 10, and 11, 2026 and
August 17, 18, 19, and 20, 2026 and
October 5, 6, 7, and 8, 2026**
All events run from 11 am to 10 pm

7101 Democracy Boulevard, Bethesda, MD
(Westfield Montgomery Mall)

Mention our Foundation so we get the donation

Website: www.cpk.com/locations/california-pizza-kitchen-bethesda [promo code of **BACK20%**]

Parts of Proceeds to Foundation

Dine in, Take out, Pick up (301-469-5090)

* Our Foundation will receive 20% of sales if you mention
our name when you order

The Judith A. Lese Breast Cancer Foundation, Inc.

Email: LeseCancerFdn@aol.com / **Website:** www.judithalese.org



Est. 2003



KENDRA SCOTT

Kendra Scott (Bethesda Row)

Fundraiser Events* to Benefit

**The Judith A. Lese
Breast Cancer Foundation**

December 19 and 20, 2026 from 10 am to 8 pm

4835 Bethesda Avenue, Bethesda, MD

You can also shop online (www.kendrascott.com):

December 19 (12 am) to December 20 (11:59 pm)

*promo code: **GIVEBACK-LOXCC***

*Kendra Scott will donate a portion of event sales to benefit
The Judith A. Lese Breast Cancer Foundation

***The Judith A. Lese
Breast Cancer Foundation, Inc.***

Email: LeseCancerFdn@aol.com / Website: www.judithalese.org



Est. 2003